



LEARNING • ACHIEVEMENT • GROWTH • DIRECTION



# Pocantico Hills Central School

Learning- Achievement-Growth-Direction-Preserving History



## 2021 Capital Project: Phase I

**BBS** ARCHITECTS  
LANDSCAPE ARCHITECTS  
ENGINEERS

[www.BBSARCHITECTURE.com](http://www.BBSARCHITECTURE.com)

March 11, 2021

# Linking Infrastructure to Educational Outcomes

Using the BCS to inform programming/spatial needs/educational design decisions allow schools to balance infrastructure needs with modern teaching theory and technology.

Practical and appropriate infrastructure design supports dynamic learning environments of the future and secure Staff and student's health and wellbeing.

Natural Lighting

Indoor Air Quality

Thermal Comfort & Control

Interior Layout and active design

Technology

Sound

Electrical Infrastructure

Look and Feel

# Capital Project

Phase I



Academic  
Support

Health &  
Safety

Infrastructure

# Capital Project Plan

## Proposed/Anticipated Scope of Work



Parking/Pavement



Classrooms Block Renovation-1954 Addition



Retention Pond Repair



Play Area Upgrades

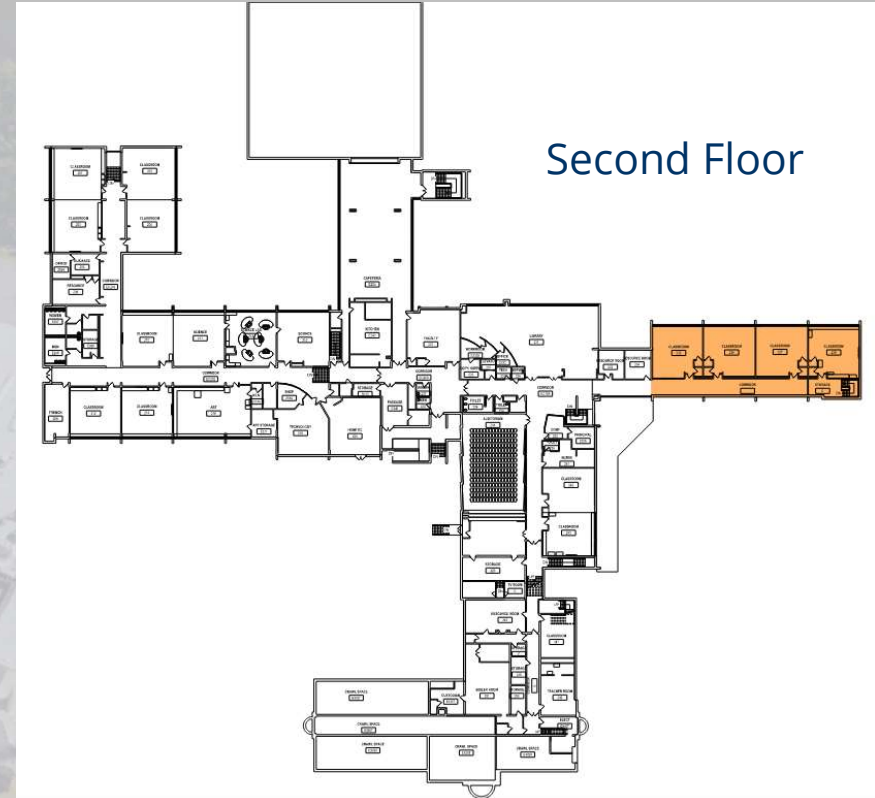
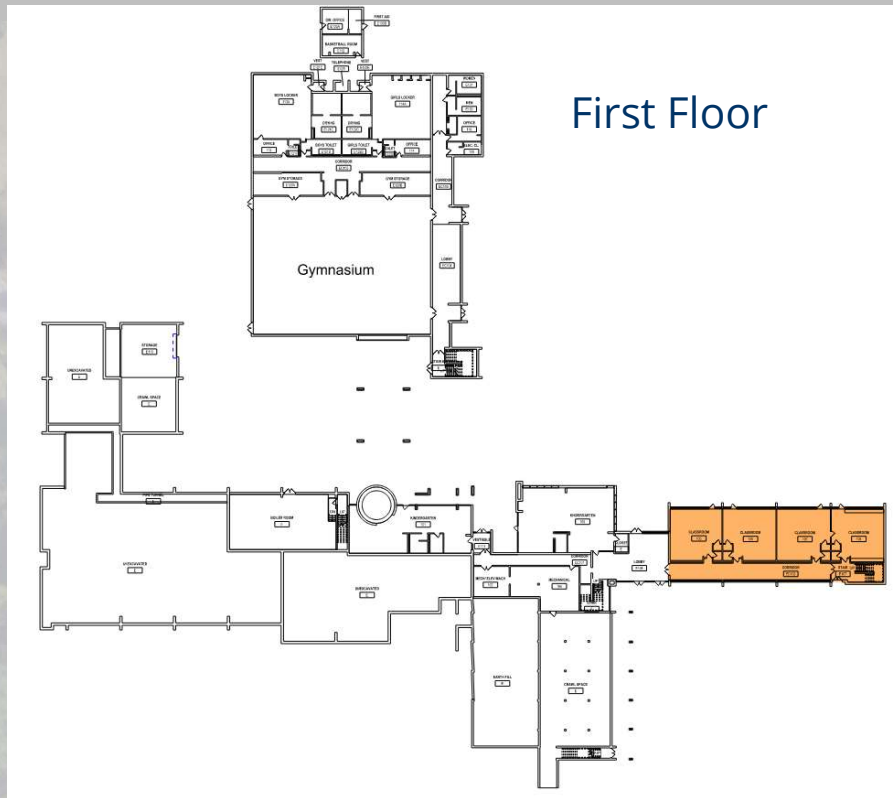


Sidewalk Replacement/Repair



HVAC, Plumbing and Electrical Upgrades

# First Floor Scope items



AS

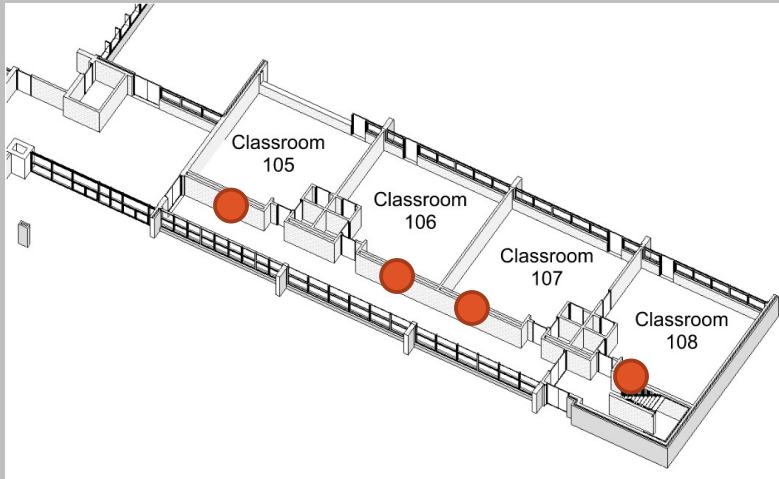
Renovate classrooms block in 1954 Addition.

H&S

- Remove Gym Partition & Provide Top-Down Suspended Curtains for Quadrant Spaces

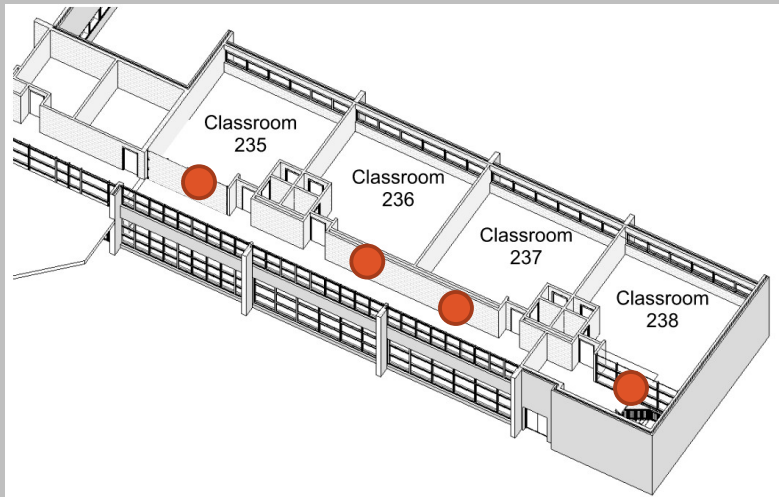
# Classrooms Corridors -1954 Addition

Existing



Replace non-compliant glazing at corridor walls. Or remove completely.

Adjust wall configuration and replace casework in the corridor walls.



# Classrooms Renovation -1954 Addition

Existing conditions

Green information wall

New cabinets  
ADA  
Compliant

New ceiling  
with better  
lighting

New storage

New/Bigger  
interactive  
Smart board  
(movable to  
be able to  
project in the  
wall)

Dry Erase  
painted wall

Back wall  
Build Storage  
(floor to-  
ceiling)  
Open or  
closed



# Classrooms Renovation -1954 Addition

Existing conditions

Proposed



More productive



Versatile furniture



Greener/happier



Improved lighting



Better Daylight



Better Ventilation



# Classrooms Renovation -1954 Addition



Phonetics carpet & sensory appliances such as special lighting and sensory stations in the classroom.

Wall storage can include racks for stability balls or equipment needed for sensory education



# Other Sample Classrooms



# Other Sample Classrooms



Versatile  
furniture

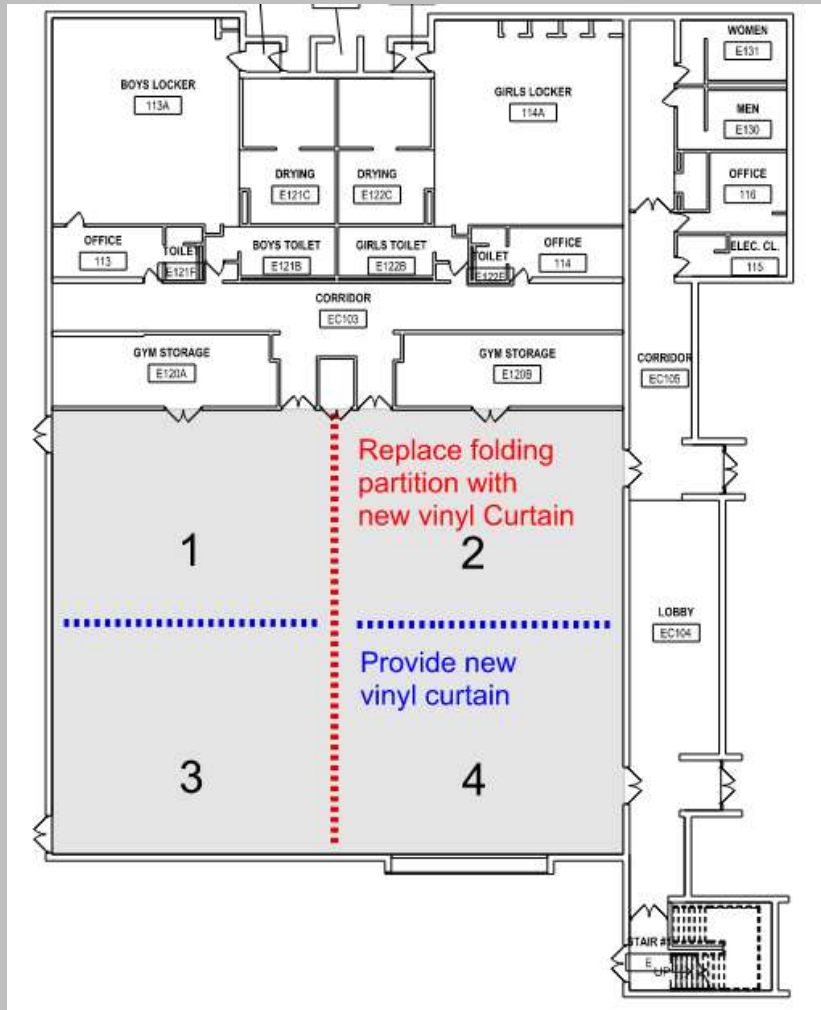
# Gymnasium

Existing

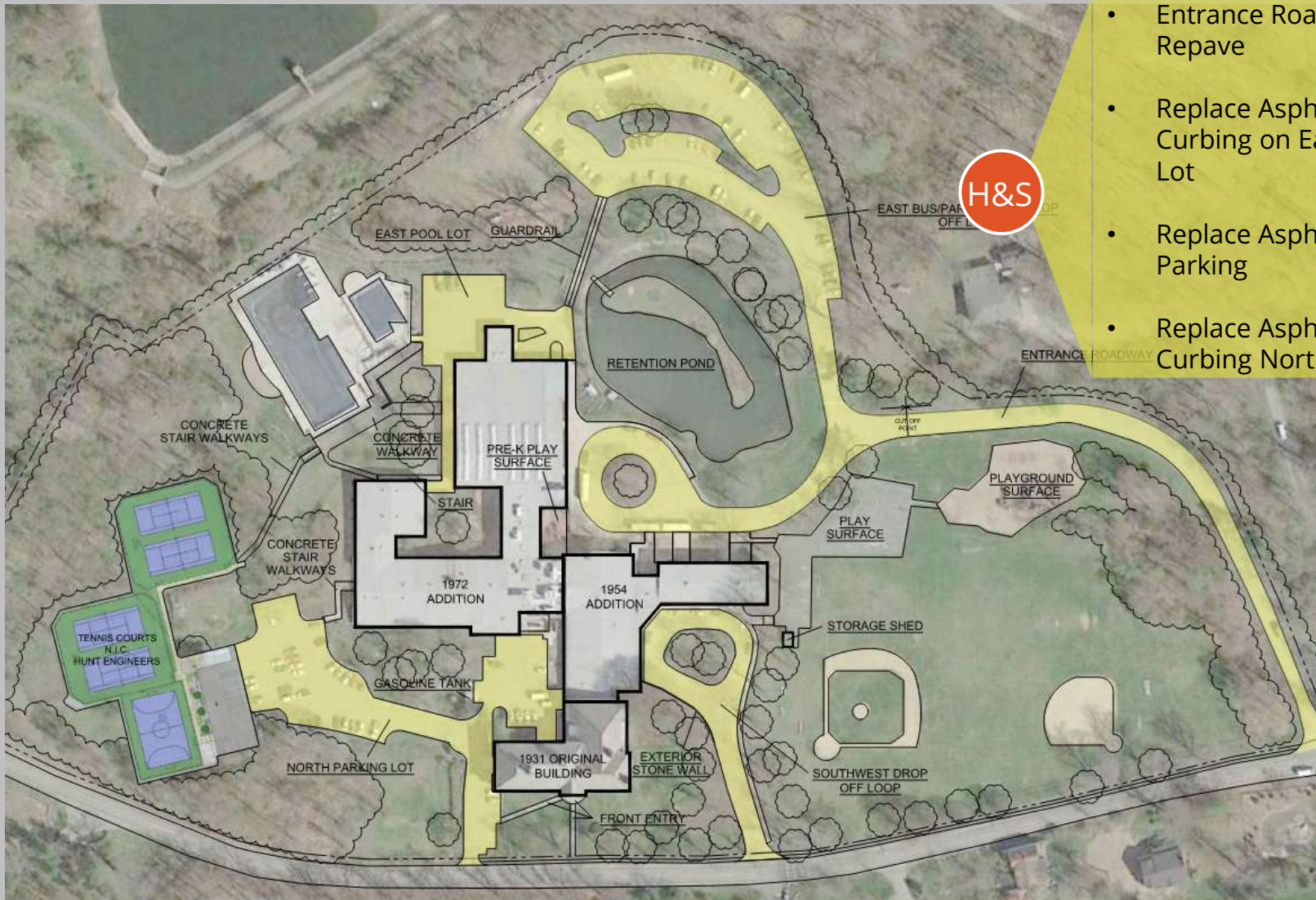


Remove Gym folding partition. Functionality of movable wall is not convenient for the space

# Gymnasium curtain wall



# Site Work: Paving



- Entrance Roadway Mill and Repave
- Replace Asphalt/ Concrete Curbing on East Bus/Parking Lot
- Replace Asphalt on East Pool Parking
- Replace Asphalt and Concrete Curbing North Parking Lot

# Paving Existing Conditions

## Existing Conditions

Drop off Loop



North Parking Lot

Tennis Parking Lot



Bus Parking Lot

# Site Work: Sidewalk



- Replace Concrete Stairs and Walkways at: Pool Area, North Entry of 1974 Addition, Front Entry, Tennis Court walkway towards Pool, West and East Drop Off Loops
- Front Entry Ramp
- Pool Area Concrete Walkways



# Stairs and Walkways Concrete Replacement

Existing Conditions



# Flagstone Repair/Replacement

Existing Conditions



Main Entrance Steps/Walkways



Main Entrance Steps/Walkways

# Site Work: Retention Pond & Play Areas



- Dredge/Repair Retention - Provide Bubbler System
- New Pre-K Playground and new surface area
- Pre-K New Surface Area
- Provide New fence in South Field/Courtyard
- Replace Play surface at South Field Area



Replace Storage Shed

# Retention Pond Existing Conditions



o Hills School

Dredge/Repair Retention - Provide Bubbler System

## Outdoor Learning Initiative



# Facade repair

Existing Conditions



Wood Fascia Replacement



Wood Facade Repair

# System Upgrades



## Infrastructure

IN

- Rebalance The Maker Space AC which gets too cold due to the FACS not being connected to the 2010 unit
- Restore the relief path from the cafeteria to the kitchen to provide proper makeup air to the kitchen hood
- Install the 2<sup>nd</sup> floor ladies' room exhaust fan sitting in the lower-level mechanical room from the 2010 project.
- Provide GFI receptacles at existing slop sinks.

# EPC and Sustainability

## Savings

Average Electricity  
for 1 year of

35<sub>x</sub>



Environment  
consciousness and  
Healthy spaces that  
improve staff and  
student's productivity

Better infrastructure  
= Better efficiencies,  
better world





# Phase 1 Capital Projects Budget



# Community Presentation

Thursday March 18, 2021 7pm

Capital Project and Roof Vote

Tuesday May 18<sup>th</sup> 2021



Questions?  
Thank you for the opportunity